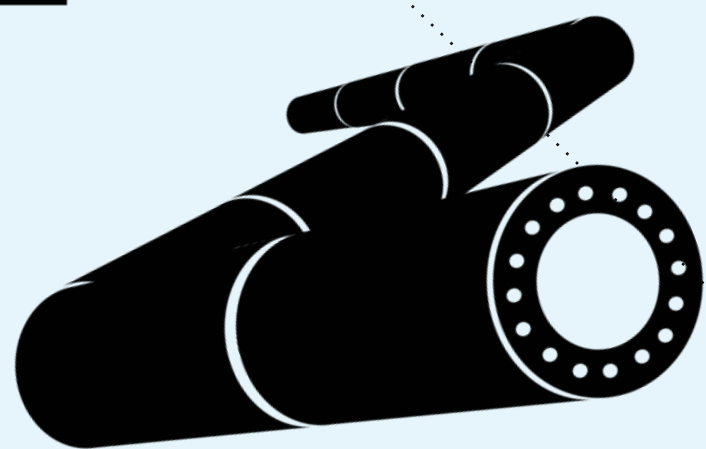
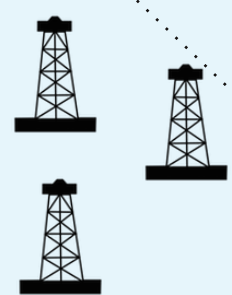
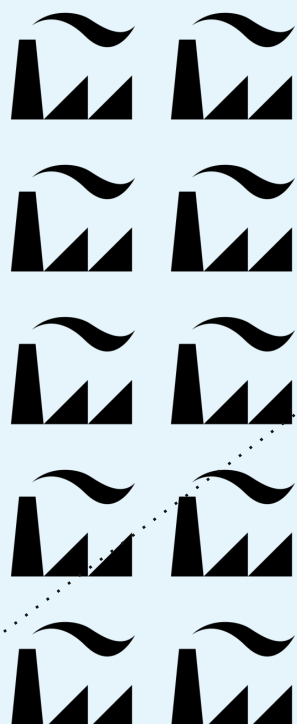


# Elba Island LNG Expansion: All Risk, No Reward

**1** Extracted natural gas piped to Elba Island

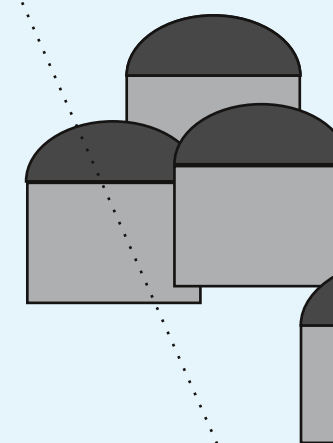


**10** Liquefaction units chill natural gas to -260 F

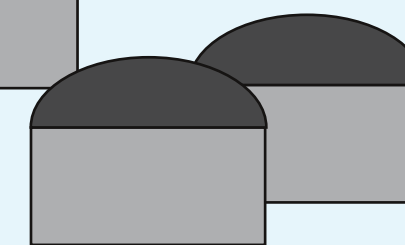


**2** Elba Island: Liquefies 2.5 million tons of natural gas per year

**3** LNG stored in 5 tanks with a total storage capacity of 11.5 billion cubic feet



**3** tanks built in 1970s before modern DOT safety standards

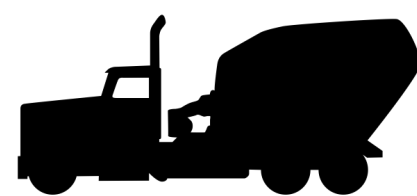


**2** large tanks stand over 16-stories tall

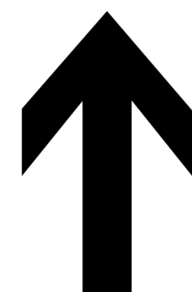
**6,165** tons per year: Greenhouse gas emissions from LNG tankers calling on Elba



**4** 3 to 4 ships per month, exporting LNG to foreign markets



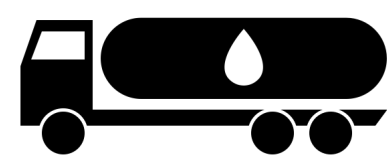
**Over 10,000** trucks per month during first year of construction



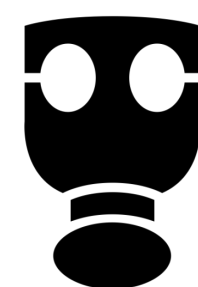
**700%** increase in greenhouse gases from the import facility



**396,284** (tpy) of greenhouse gases



**Over 200** chemical trucks / month to operate the proposed facility



**35** (tpy) of volatile organic compounds and hazardous air pollutants

This?

Or

This?

